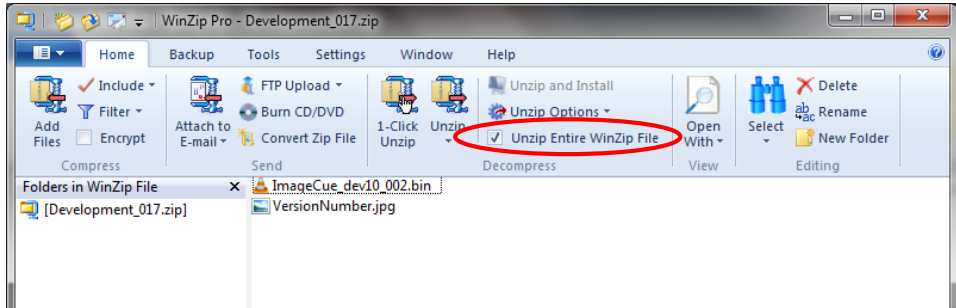


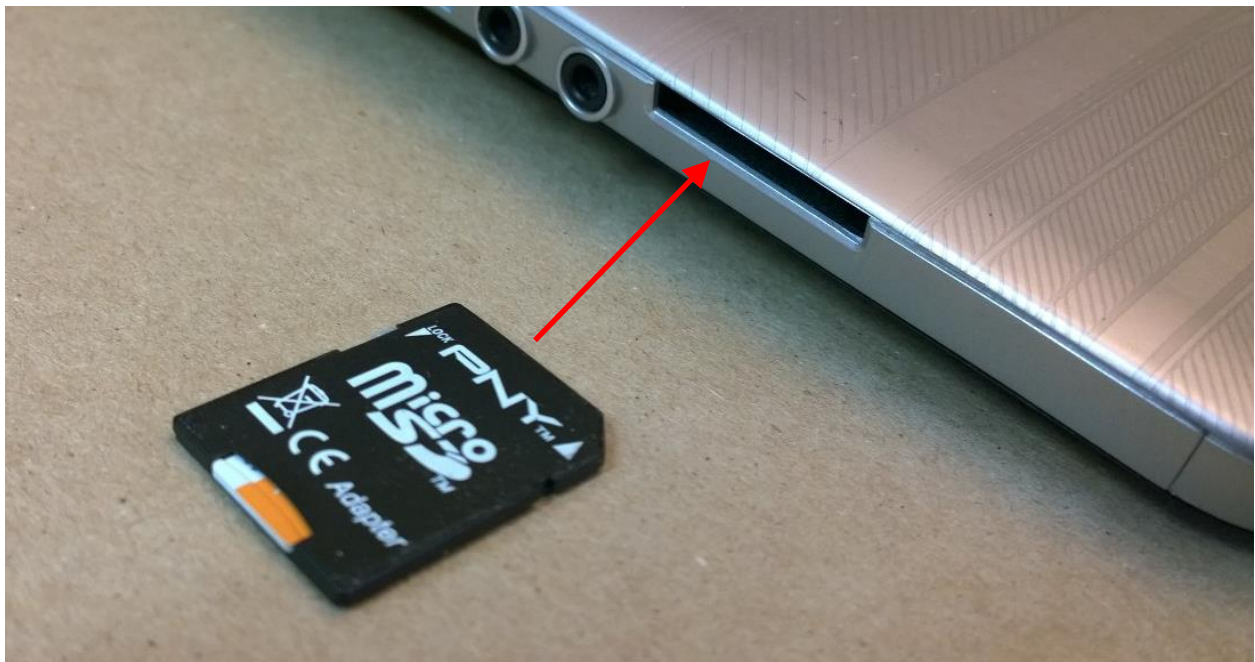
Updating ImageCue SD Card Software

1. Download update zip file (or get it from your email).
2. Open the file with WinZip (or other zip file utility).

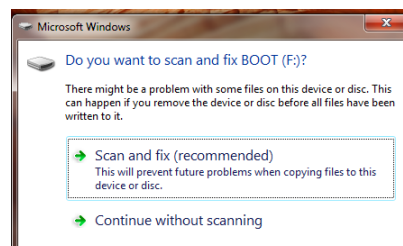


Make sure that “Unzip Entire WinZip File” is selected.

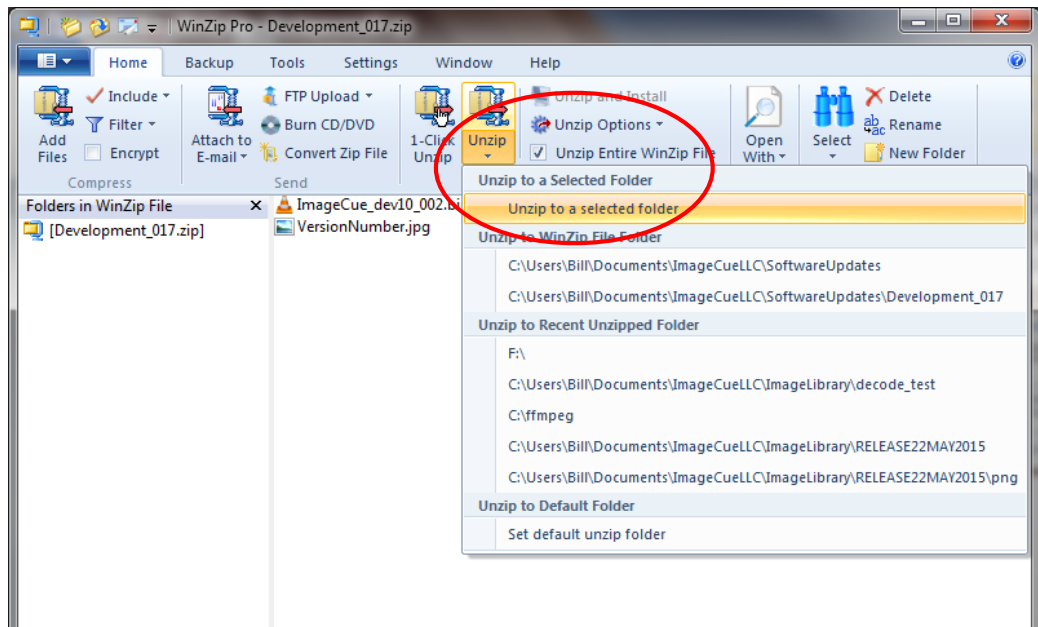
3. Insert / open the ImageCue SD Card. You will probably need a microSD to standard SD adapter.



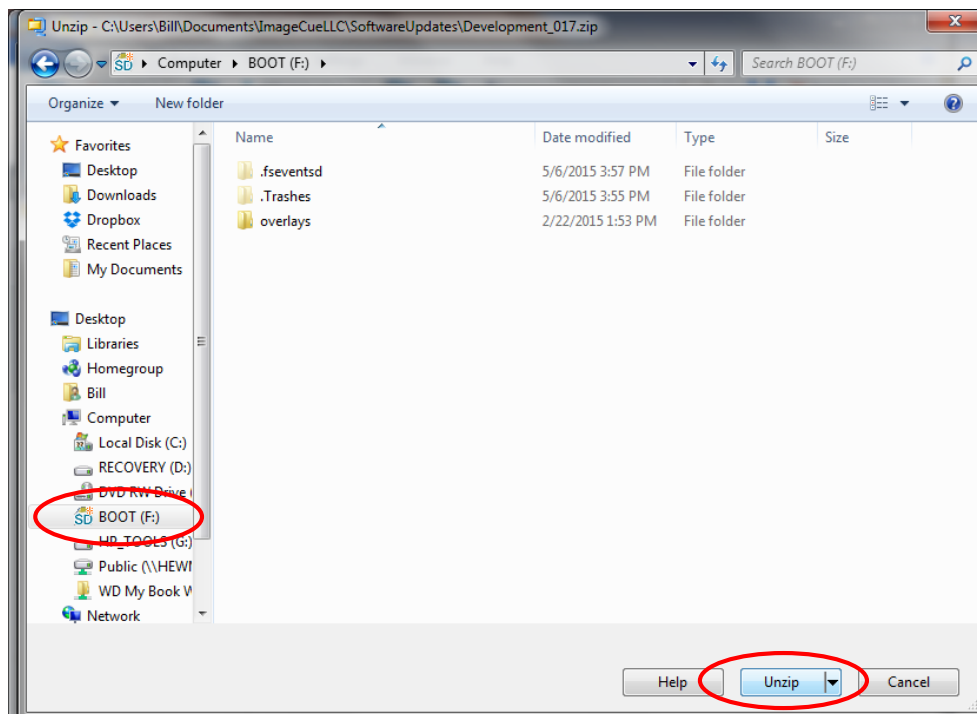
Note: You may get a “Scan and Fix” message from Windows. This is normal as the device has been in a Linux environment. You can choose “Continue without scanning”.



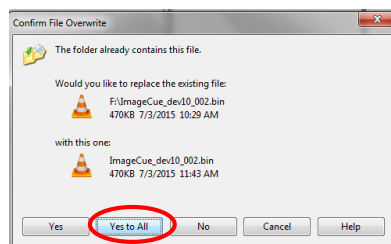
4. Choose “Unzip” and “Unzip to a selected folder”:



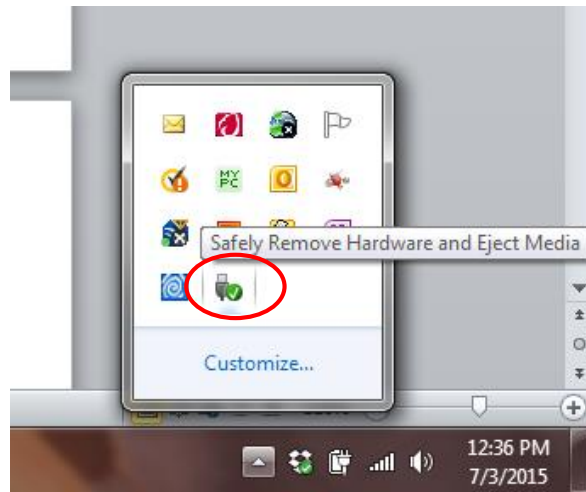
5. Select the SD card as the unzip location:



6. Choose “Yes to All” to replace all of the files:



7. "Eject" the SD card:



8. Wait for the message "Safe to remove hardware", then remove the SD Card.

9. Put SD Card back into ImageCue (MAKE SURE POWER IS OFF!!!).

10. When you start up ImageCue it should be the new version. You can check this by briefly setting channel 10 to a level of 255 (dimmer must be up). The version number will be displayed.